

Multi-zone Programmable Paging System



Features

- Fully programmable zoned input UHF transmitter
- 5 & 10 zone models
- All inputs selectable as dry contact or voltage input
- AC Mains, 24V DC & 12V DC models
- Range up to 1 mile with standard 1/4 wave aerial
- All parameters PC programmable
- Mains dropout relay
- Rf power output 1W max

PageTek 4 now incorporates our latest 1 watt transmitter, which provides excellent signalling propagation in commercial environments. This exceptionally flexible programmable UHF POCSAG transmitter is available in either 5 zone or 10 zone models, which will automatically send messages direct to radio pagers and signal to fixed receivers when activated. The unit can be triggered by using the normally open or normally closed zone inputs on a volt free basis, or by the application or removal of voltages (in the range 5-18V dc). The mains powered system is available with optional battery back-up.

PageTek 4
Mains Transmitter

Plant Monitoring



Security & Fire Systems



Programming

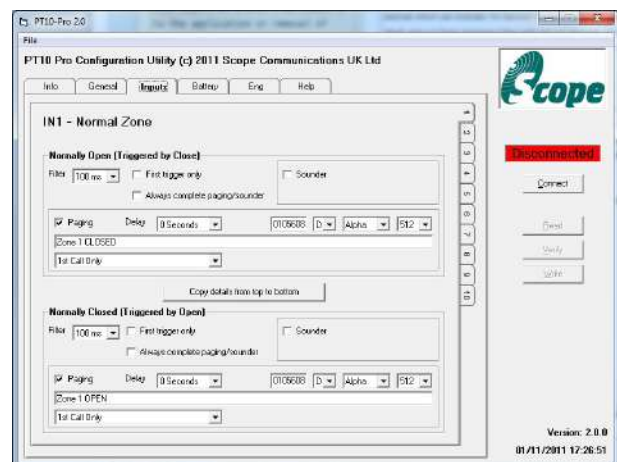
Scope PageTek 4 paging transmitters are available with either 5 or 10 programmable zone inputs which, when triggered, will automatically send the active zone message to portable or fixed pagers. This message can be repeated at predetermined intervals and a secondary message can be sent when the zone returns to its inactive state if required.

Multiple transmitters can be deployed at various locations all signalling to the same pager/pager groups.

Regular 'In Service' calls can be automatically sent to the receiving devices which can indicate 'No Service' on the pagers, or trigger a 'fault' zone on fixed receivers if the calls are not received. This gives the end-user confidence that the system is operating properly. The 10 zone version also has a special 'Burglar Alarm' mode with configurable entry/exit delay, transit zones and entry zone.

For advanced users who wish to program the unit themselves, a Programming Kit can be purchased. This consists of Windows based application software and a USB cable for PC. This allows all functions to be programmed and stored in the system's non-volatile memory.

12VDC, 24VDC and mains powered versions are available, with an optional battery back-up facility for the mains version.



PT10PROG Programming application, input configuration screen

PC Programmable Functions

- Individual Zone States (normally open, normally closed or change of state)
- Voltage Input Triggers (5-18V dc)
- Input trigger time
- Transmission Delay
- Transmission repeat functions
- Local output (open collector, 24V dc @1A max)
- Identity code (capcode) for each zone and each state
- Preformed text messages, either numeric or alphanumeric
- Low Battery Signal
- 'In Service' call period
- 'Burglar Alarm' mode (10 zone version only)
- Tamper zone

Performance

A standard quarter wave aerial will provide more than adequate performance for most industrial sites and buildings well in excess of 100,000 sq ft or a free radiated range of up to a mile. Performance can be improved with a centre fed half wave dipole aerial, mounted either inside or outside the building.



Machinery Status Alerts

Pagers - General

A wide range of flexible text pagers exist that can be tailored to meet your exact requirements. Many of the pagers that we now supply are available with advanced software control, enabling them to be programmed in a specific configuration which the user cannot change (e.g. to prevent accidental switch-off, or to lock the pager in vibrate mode so that a deaf person can always detect a call). Please see specific pager brochures on the wide range of pagers available to suit these systems.

Fixed Receivers for Telemetry, Telecommand and Monitoring

For telemetry or telecommand applications, our multi-zone receivers will operate relay outputs. The outputs can be set as momentary or latched and can be unlatched or reset by further transmissions. Our receivers can also automatically monitor activity from any number of transmitters and output the data on a serial port. There is also a fixed, mains powered, paging receiver available which can be desk or wall mounted and will provide the same full text readout as a standard pager with the advantages of a louder alert and LED indicator lights.

See the brochures covering these products for more information or ask our technical sales team.

Programming and Product Related Services

A range of standard program settings are available from stock, together with a bespoke service, and PC app software is available for customers who wish to undertake their own programming.

Specification

MAINS POWERED MODELS

Footprint: (H)* 328 x (W) 190 x (D) 75 mm
[*496 mm with 1/4 wave antenna]

Power Input: 90-230V AC 50-60 Hz @250mA

Facilities required: 230V ac 5A fused spur within 1 metre of unit.

DC POWERED MODELS

Footprint: (H)* 185 x (W) 140 x (D) 42 mm
[*335 mm with 1/4 wave antenna]

Power Input:

12V model: 12V-13.8V dc @ 0.8A (max)

24V model: 13.8V - 24V dc @ 0.8A (max)

ALL MODELS

Frequency Range (MHz)*: 446.000 - 469.700

RF Output Power: 1 watt (maximum)

Compliance:

Radio Equipment Directive 2014/53/EU
ROHS Directive (EU) 2015/863

Standards applied:

EN 300 224 V2.1.1 (On-Site Paging)

EN 301 489-1 V2.2.1 (EMC)

IEC 62368-1: 2020 (Safety)

UK Licence Requirement:

Business Radio Simple Site Licence

Ofcom reference OFW432

(www.ofcom.org.uk)

* Subject to licensing conditions



DC Model

Mains Model

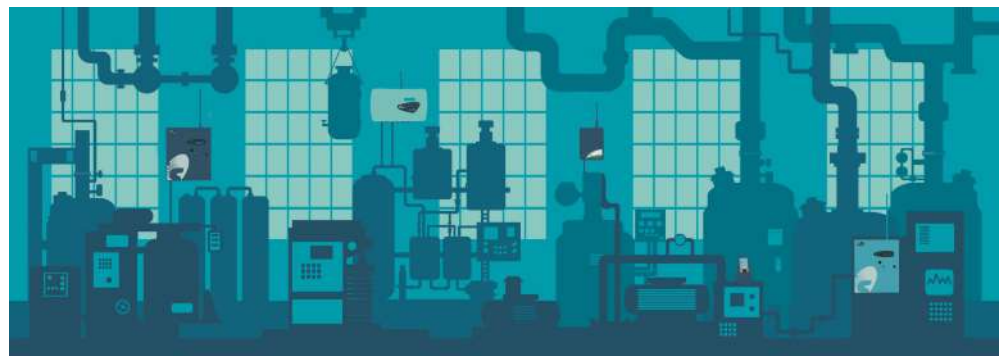


Scope Text Pagers



Scope Communications UK Ltd
Quantum House
Steamer Quay
Totnes, Devon, TQ9 5AL
England

Tel: +44 (0) 1803 860700
Fax: +44 (0) 1803 863716
Web: www.scope-uk.com
Email: sales@scope-uk.com



Licensing: This equipment requires a license for operation in the UK.
Contact our sales team for further details.

© Scope Communications UK Ltd. All specifications subject to change. E & OE.